

Enumclaw Fire Department
4-21-2021



Chief's Report

Follow up/Information

- Kevin Madill promoted to Captain on 4/1 (Fire Marshal)
- Preliminary interviews for career firefighter to occur April 26th-29th (160 Candidates)
- Oral Boards scheduled for last two weeks of May
- Captains promotional process underway (Complete May 5th)
- Recruit in in career academy is in fire portion and continues to perform well
- Second dose for mass vaccination event occurred on 4/3
- 90-day extension granted for Roosevelt property (\$10,000 earnest money, new closing date 7/22)



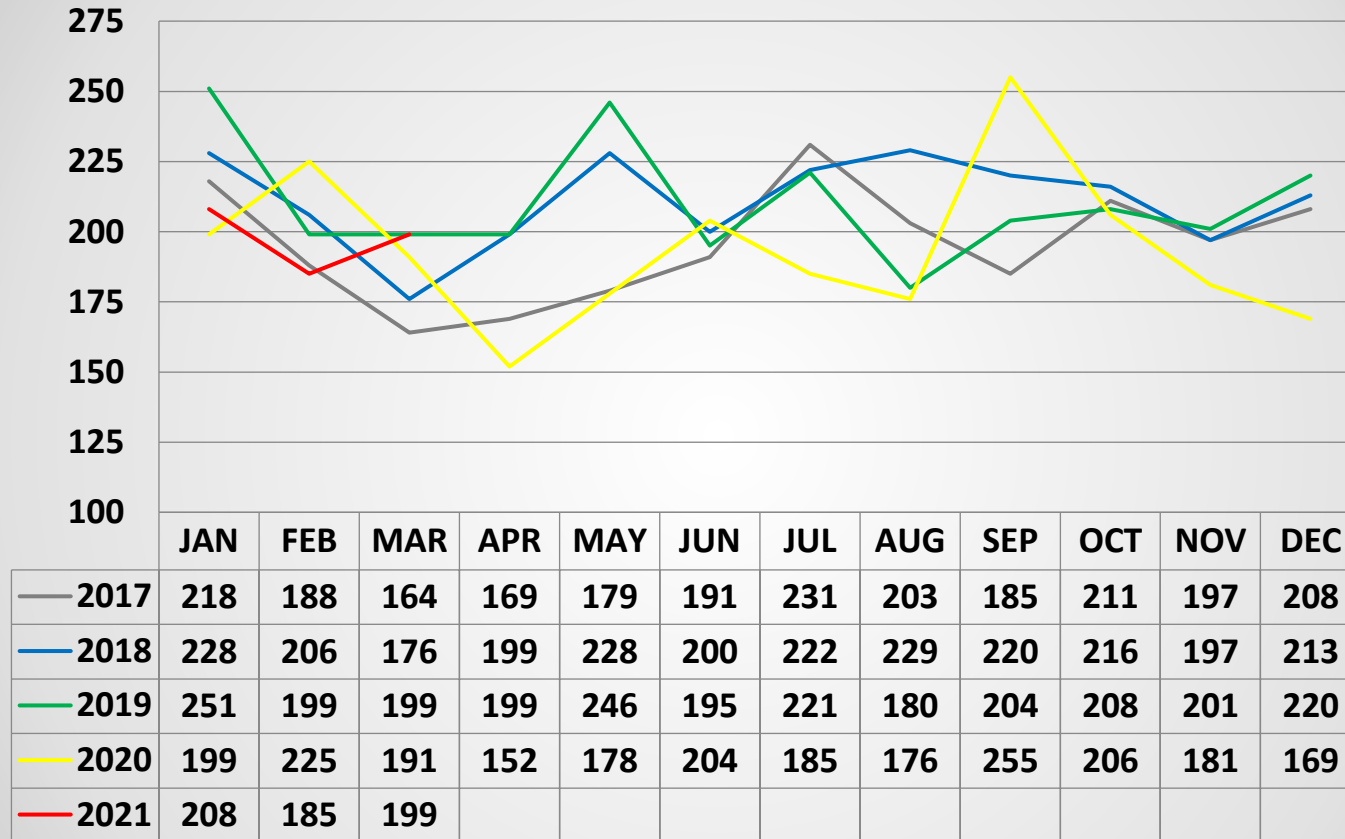
COVID-19

- 1,274 positives (55.9 per 1,000)
- 84 Hospitalizations (3.70 per 1,000)
- 35 Deaths (1.5 per 1,000)
- 9,445 people tested (752.9 per 1,000)
- 7,950 people have started vaccination series (43.1%)
- 5,110 people completed vaccination series (27.1%)
- 2,753 people 65+ years of have completed vaccination series (71.2%)
- 3,269 people 65+ years of have started vaccination series (84.6%)



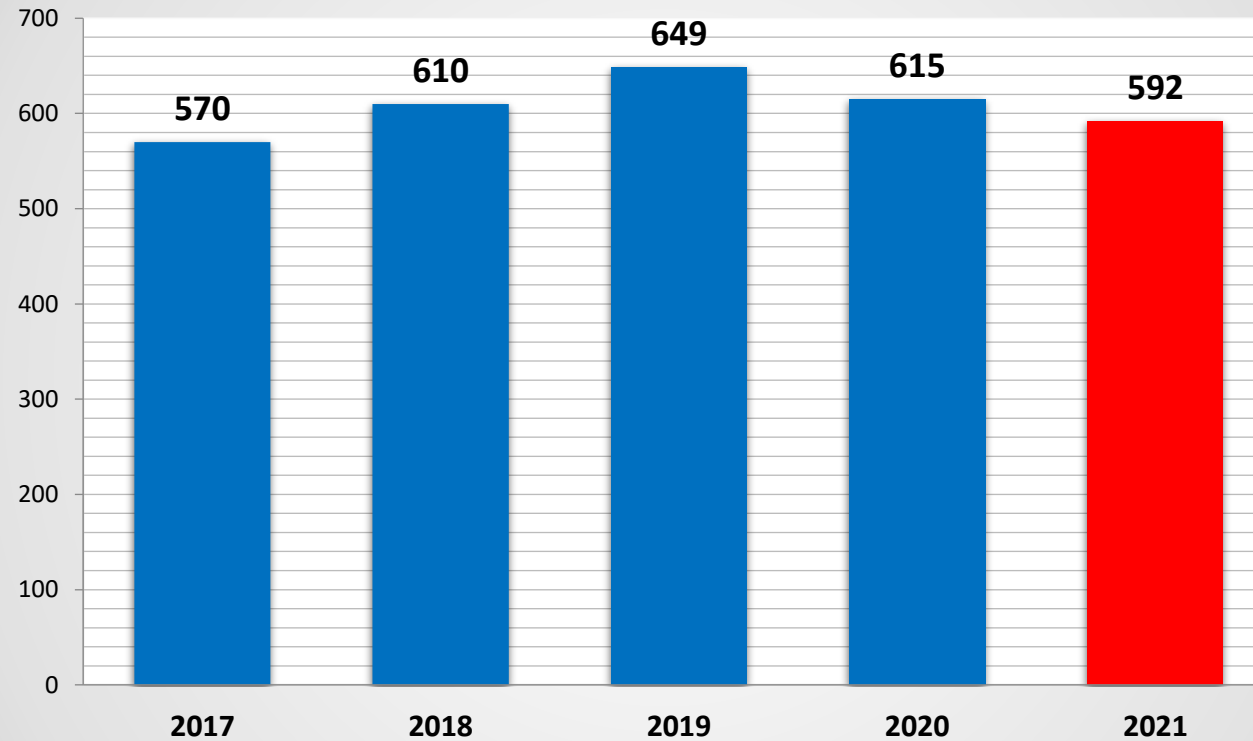
Call Volume

Monthly Call Volume Comparison



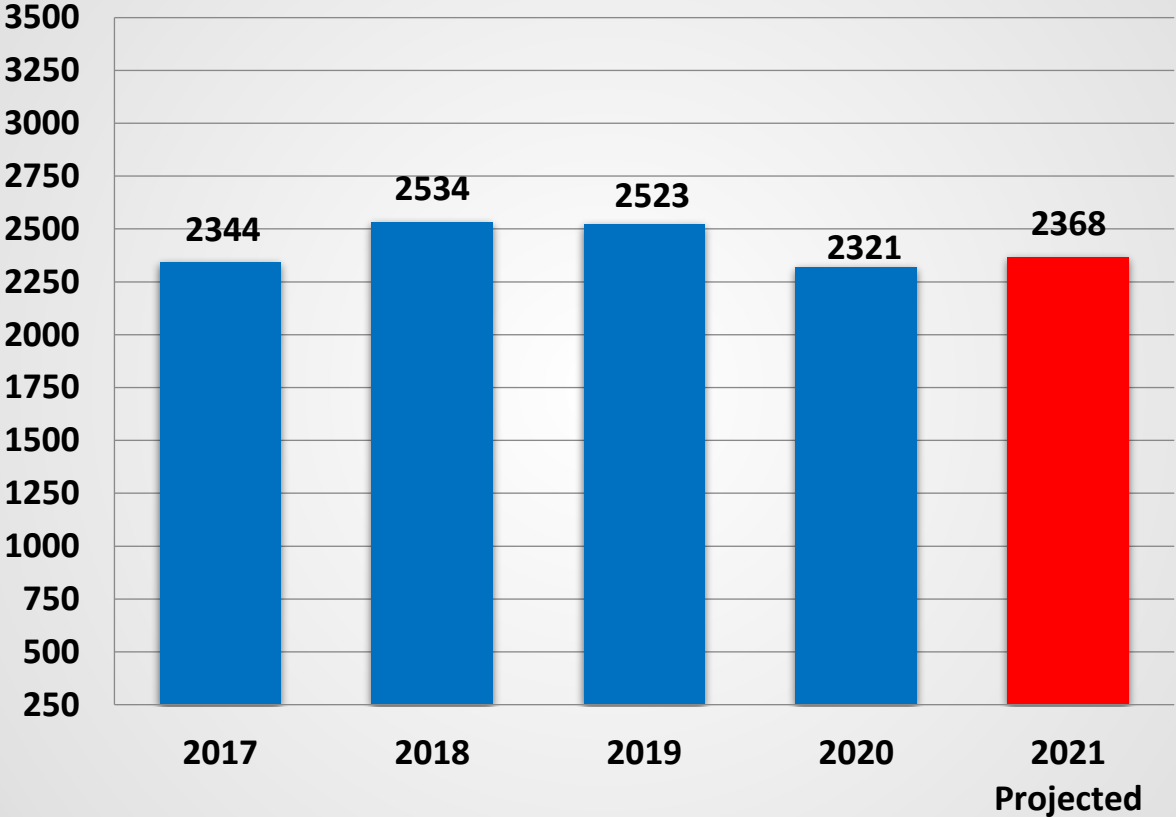
Call Volume Comparison

1st Quarter Call Volumes



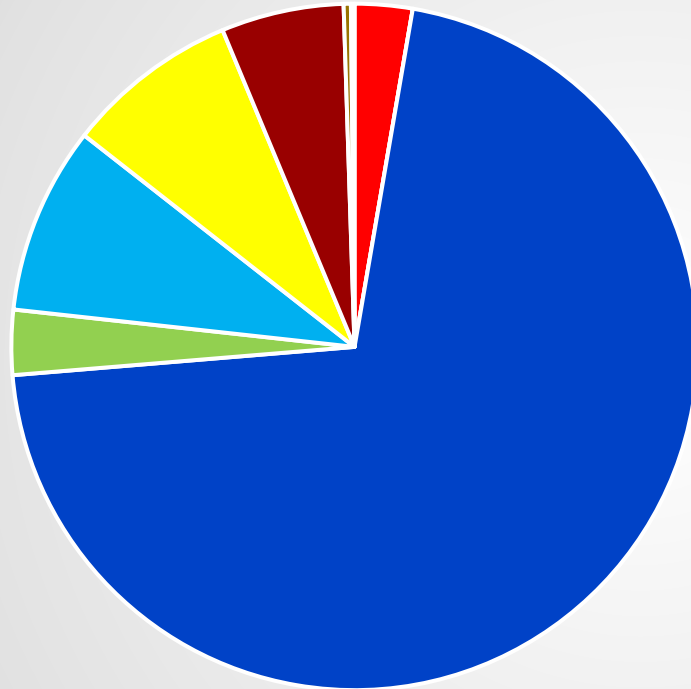
Call Volume Comparison

Annual Call Volume Totals



Call Volume Comparison

YTD Incident Types

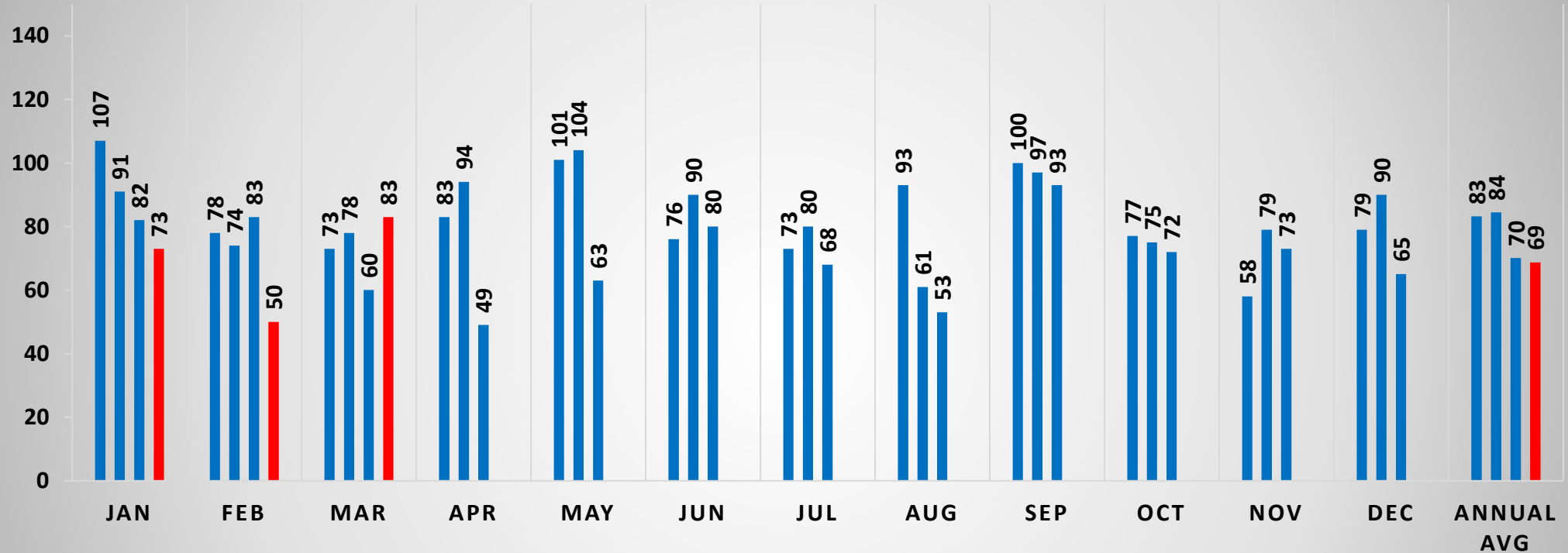


- 100 - Fire 2.7%
- 200 - Explosion Pressure 0.0%
- 300 - EMS 71.0%
- 400 - HAZMAT 3.1%
- 500 - Service Call 8.8%
- 600 - Good Intent 8.1%
- 700 - False Alarm 5.8%
- 800 - Natural Disaster 0.3%
- 900 - Special Incident 0.2%

Call Volume Comparison

TRANSPORTS

■ 2018 ■ 2019 ■ 2020 ■ 2021



2018 Total Ambulance Transports = 998
2019 Total Ambulance Transports = 1013
2020 Total Ambulance Transports = 841
2021 Project Ambulance Transports = 824

Transports

01:37

MM:SS
Average First
Apparatus Turnout
Time

03:05

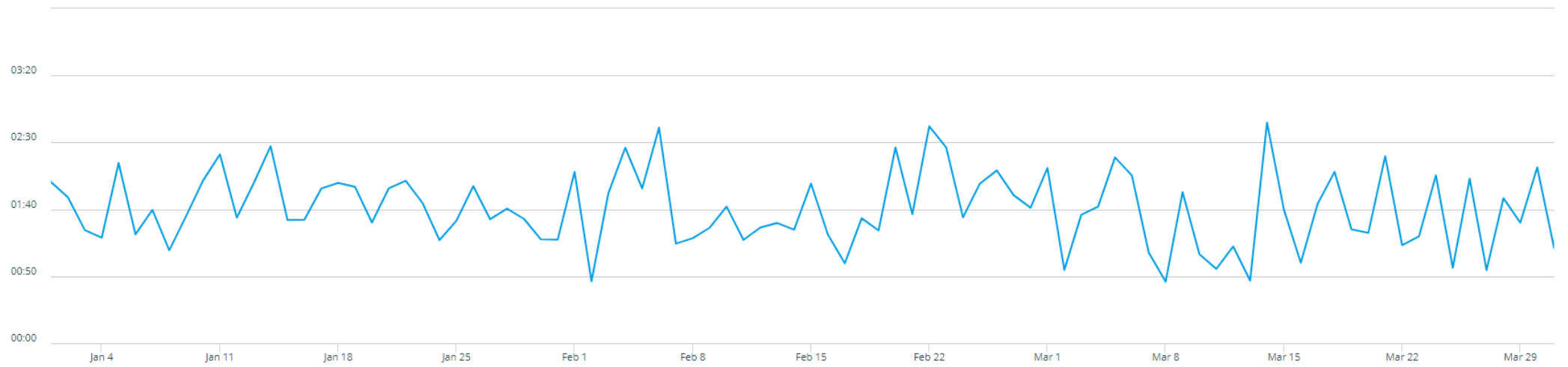
MM:SS
90th Percentile First
Apparatus Turnout
Time

90

DAYS
In Selected Time Slice

572

INCIDENTS
In Selected Time Slice



1st Quarter Turn Out times

05:17

MM:SS
Average First
Apparatus Travel Time

10:05

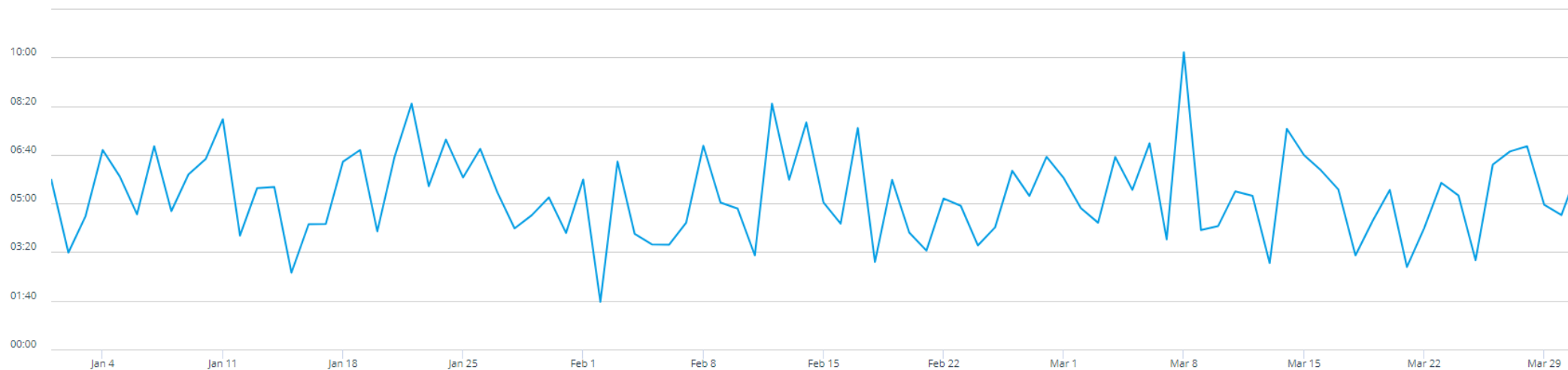
MM:SS
90th Percentile First
Apparatus Travel Time

90

DAYS
In Selected Time Slice

538

INCIDENTS
In Selected Time Slice



1st Quarter Travel Time