

**Enumclaw Fire Department**  
**6-16-2021**



**Chief's Report**

# Follow up/Information

- Possible delay on chassis for Brush truck due to microchip shortage
- 1991 Seagrave fire engine sold to Buckley Fire
- Recruit in career academy continues to perform well (Graduation 6/17/21)
- Chief's interviews for career firefighters occurred 6/8 (currently in backgrounds)
- Safe Rider citation program underway
- Phased in re-opening of fire department to the public planned for 7/6
- Standardized burn bans will be in effect this summer
- Upcoming Public Events- Stars and Stripes, Street Fair, King County Fair, Vietnam Memorial Wall



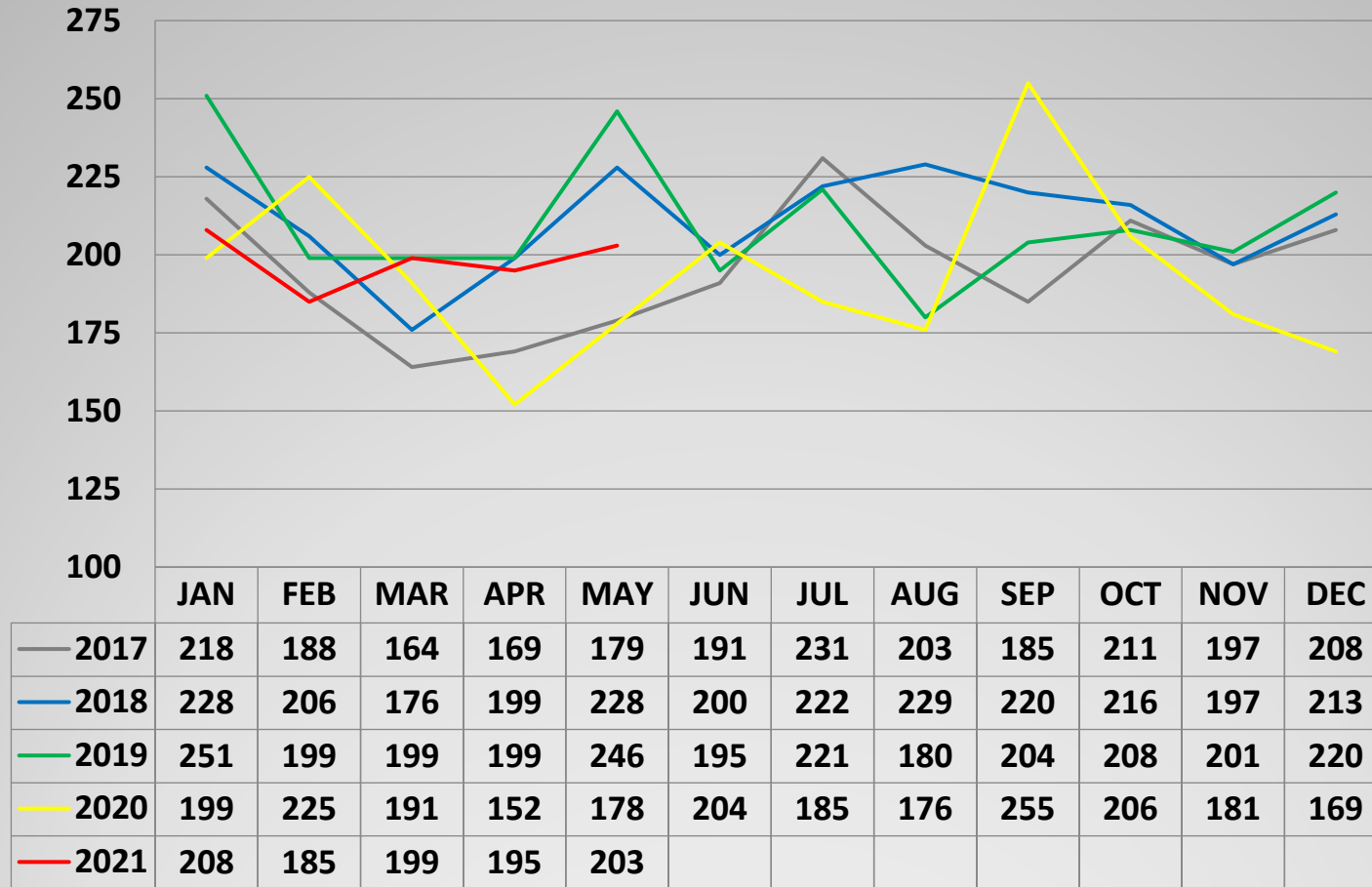
# COVID-19

- 1,672 (+72) Positives (73.4 per 1,000)
- 99 Hospitalizations (+9) (4.3 per 1,000)
- 36 Deaths (+1) (1.6 per 1,000)
- 11,226 (+558) people tested (492.4 per 1,000)
- 10,831 (+1547) people have started vaccination series (56.4%)
- 9,536 (+2,588) people completed vaccination series (47.8%)
- 96% people 80+ years of age have completed vaccination series
- 79.5% people 70-79 years of age have completed vaccination series
- 79% people 60-69 years of age have completed vaccination series
- 50.8% people 50-59 years of age have completed vaccination series
- 36.5% people 40-49 years of age have completed vaccination series
- 37.5% people 30-39 years of age have completed vaccination series
- 33.9% people 20-29 years of age have completed vaccination series



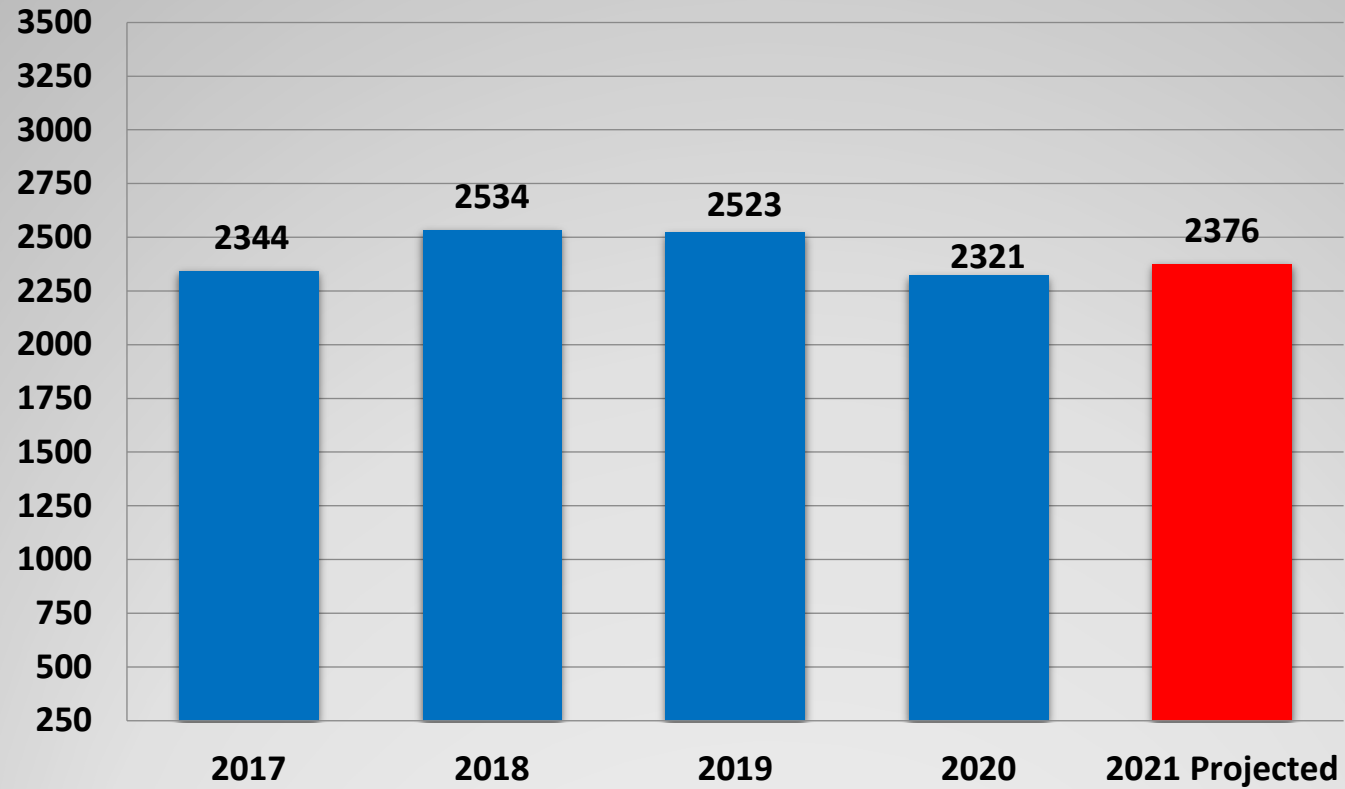
**Call Volume**

## Monthly Call Volume Comparison



# Call Volume Comparison

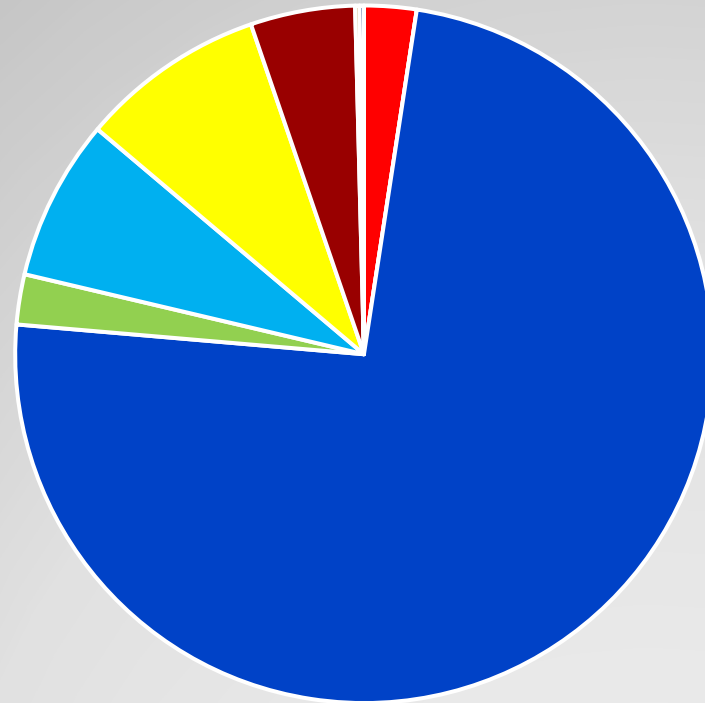
## Annual Call Volume Totals



**Call Volume Comparison**



## YTD Incident Types

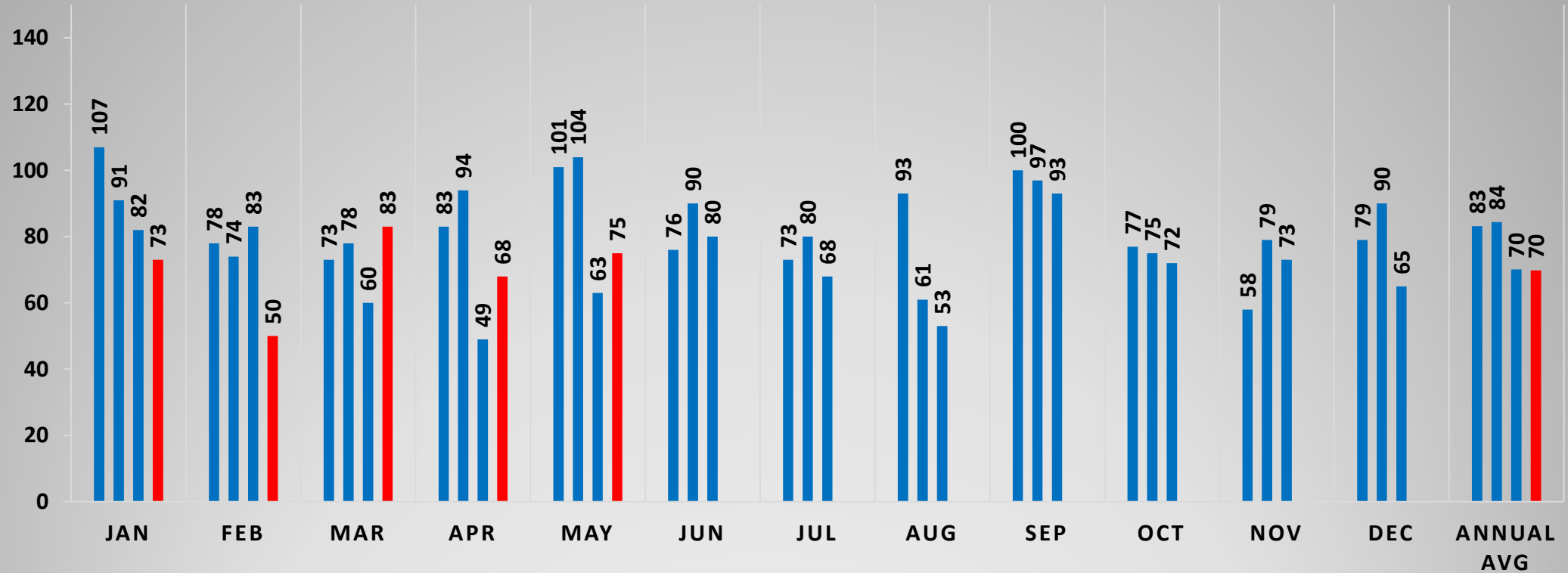


- 100 - Fire 2.4%
- 200 - Explosion Pressure 0.0%
- 300 - EMS 73.9%
- 400 - HAZMAT 2.3%
- 500 - Service Call 7.5%
- 600 - Good Intent 8.6%
- 700 - False Alarm 4.8%
- 800 - Natural Disaster 0.2%
- 900 - Special Incident 0.2%

# Call Volume Comparison

## TRANSPORTS

■ 2018 ■ 2019 ■ 2020 ■ 2021



2018 Total Ambulance Transports = 998

2019 Total Ambulance Transports = 1013

2020 Total Ambulance Transports = 841

2021 Projected Ambulance Transports = 838

# Transports