

Enumclaw Fire Department
7-21-2021



Chief's Report

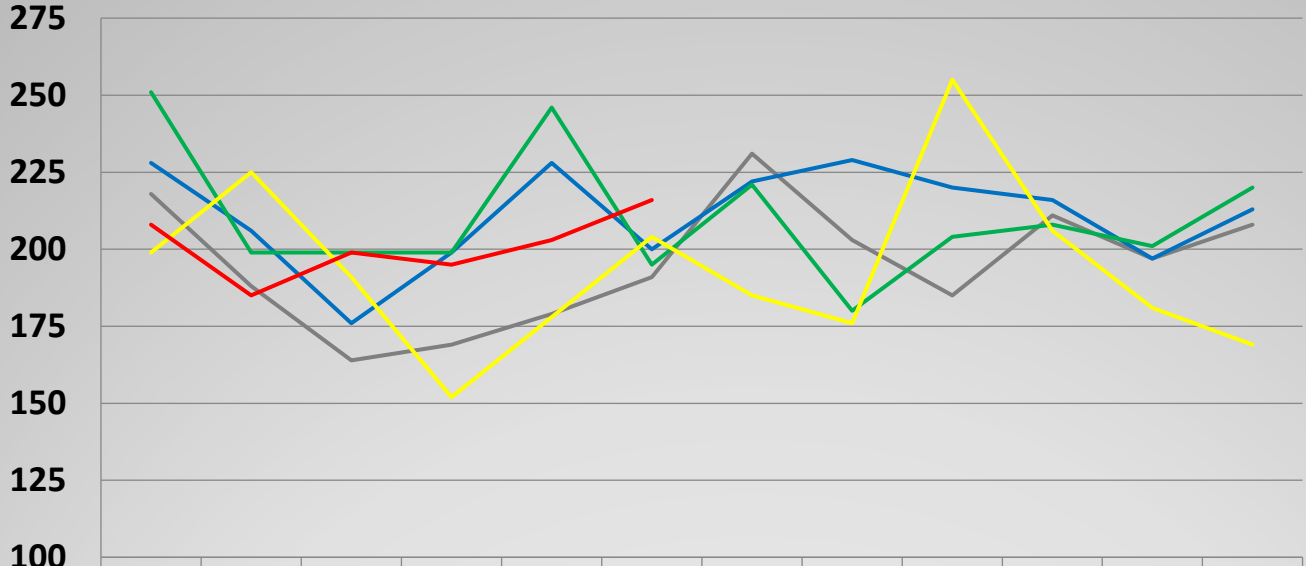
Follow up/Information

- Recruit Smith graduated from the Fire Academy with Chief's Company and Top Rung award
- Three candidates nearly complete with pre-employment screening (tentative start date 8/1)
- Heatwave brought 38% increase in calls for service
- No significant calls from fireworks
- Department is open to the public (no tours or ride-a-longs)
- Signed a cash offer on Station 43 (7/20)-potential closing date of 8/31
- Mitigating the impacts of HB 1310



Call Volume

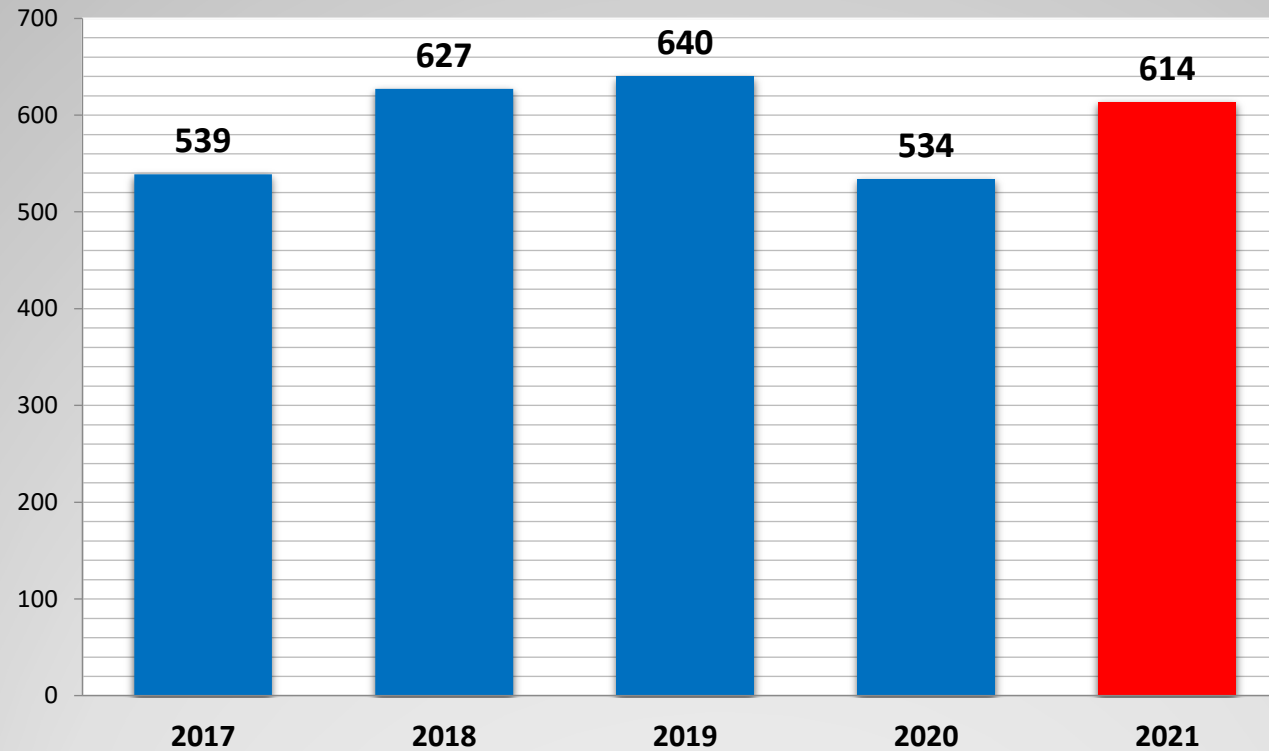
Monthly Call Volume Comparison



	JAN	FEB	MAR	APR	MAY	JUN	JUL	AUG	SEP	OCT	NOV	DEC
— 2017	218	188	164	169	179	191	231	203	185	211	197	208
— 2018	228	206	176	199	228	200	222	229	220	216	197	213
— 2019	251	199	199	199	246	195	221	180	204	208	201	220
— 2020	199	225	191	152	178	204	185	176	255	206	181	169
— 2021	208	185	199	195	203	216						

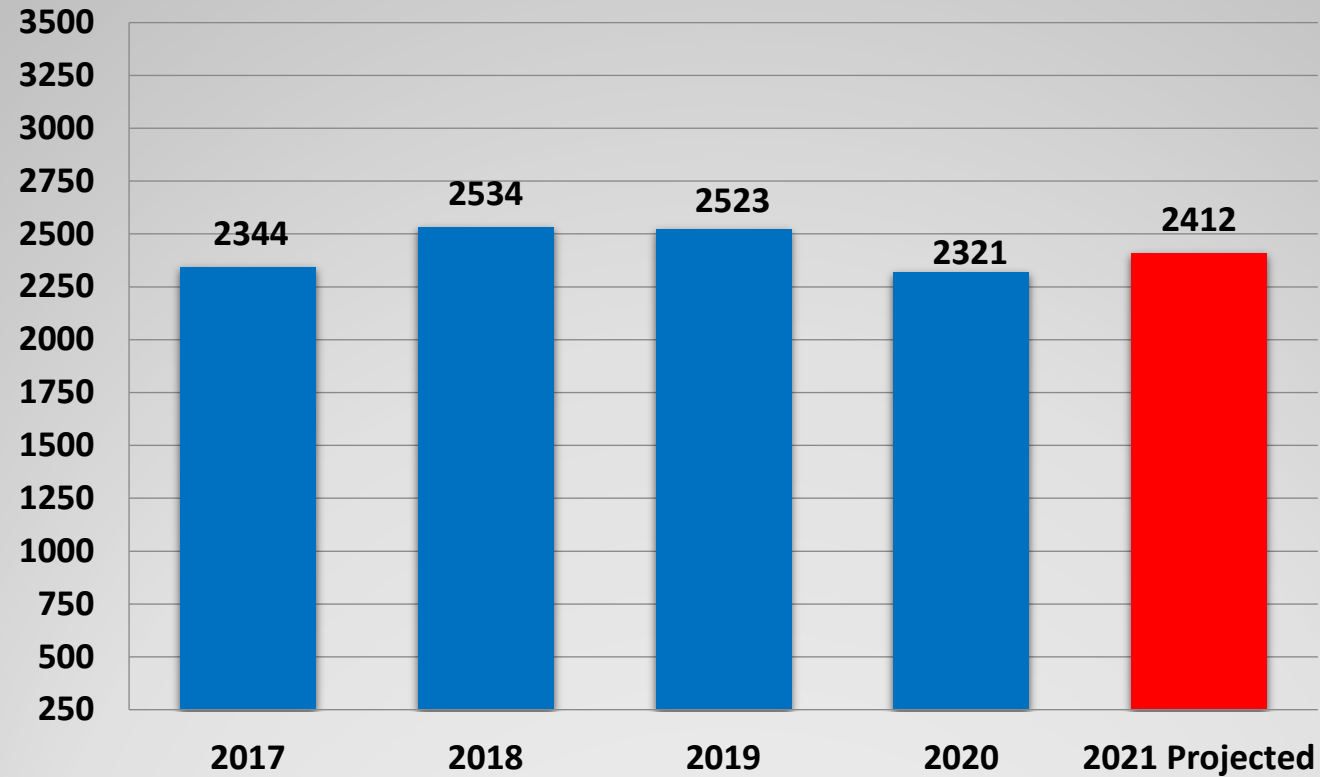
Call Volume Comparison

2nd Quarter Call Volumes



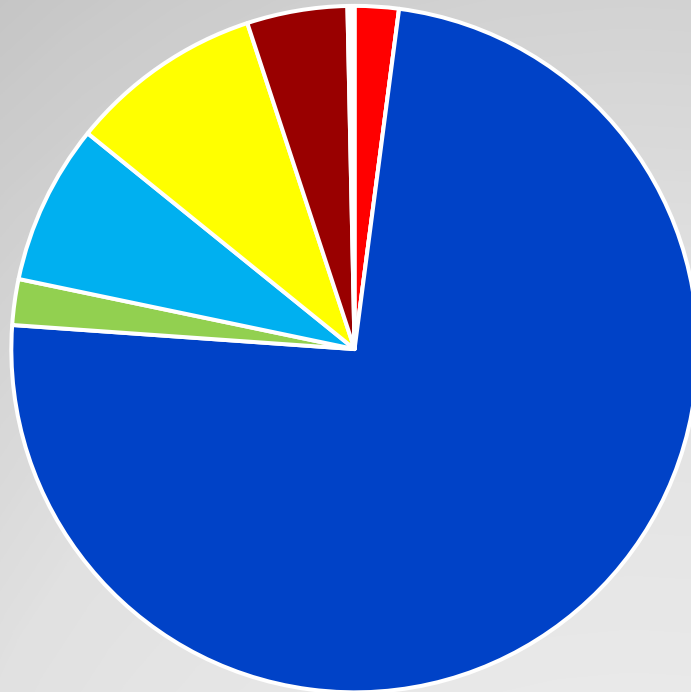
Call Volume Comparison

Annual Call Volume Totals



Call Volume Comparison

YTD Incident Types

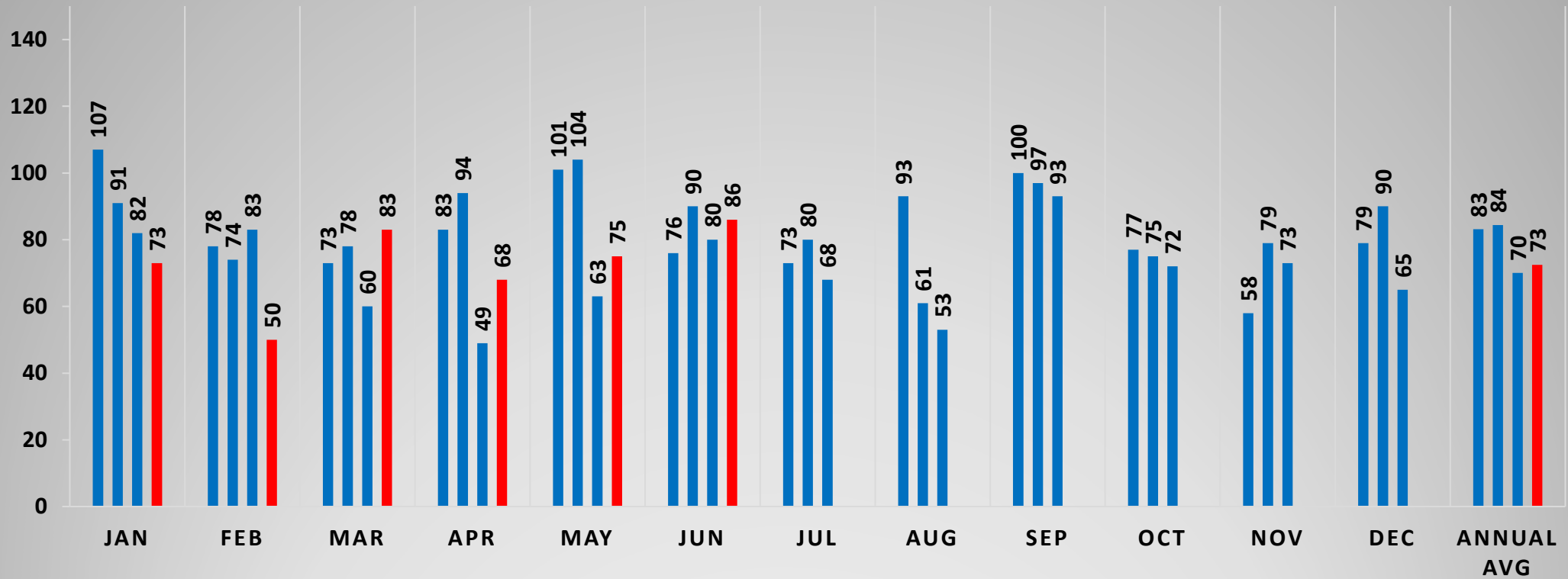


- 100 - Fire 2.1%
- 200 - Explosion Pressure 0.0%
- 300 - EMS 74.0%
- 400 - HAZMAT 2.2%
- 500 - Service Call 7.5%
- 600 - Good Intent 9.1%
- 700 - False Alarm 4.7%
- 800 - Natural Disaster 0.2%
- 900 - Special Incident 0.2%

Call Volume Comparison

TRANSPORTS

■ 2018 ■ 2019 ■ 2020 ■ 2021



2018 Total Ambulance Transports = 998
2019 Total Ambulance Transports = 1013
2020 Total Ambulance Transports = 841
2021 Projected Ambulance Transports = 870

Transports

01:35

MM:SS
Average First
Apparatus Turnout
Time

02:48

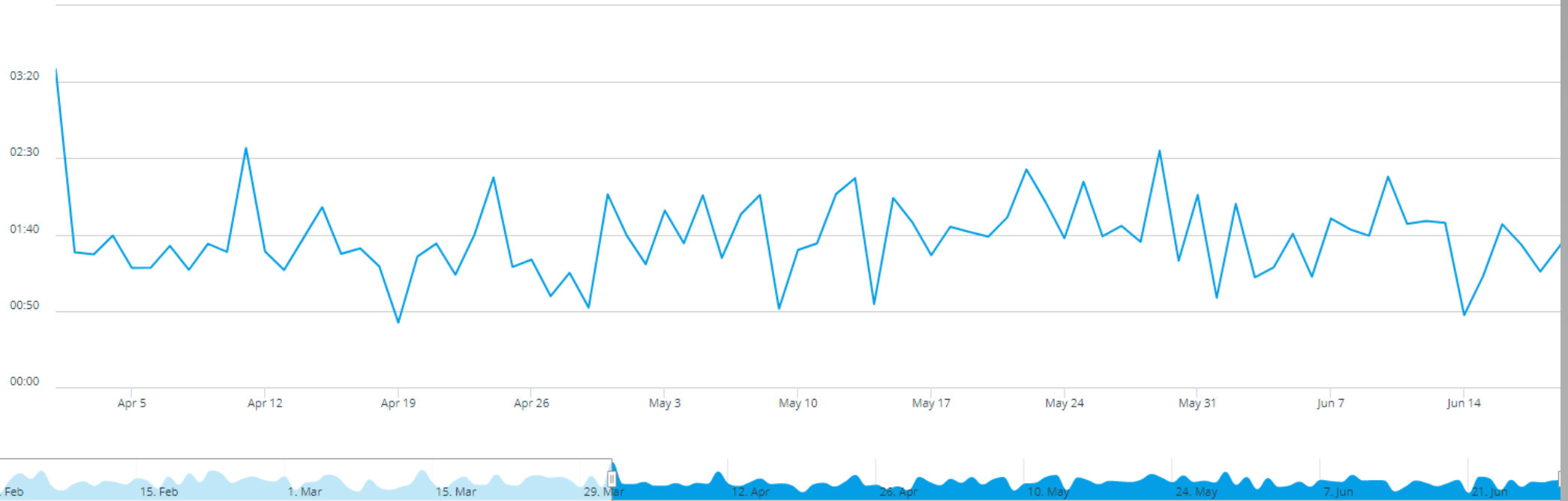
MM:SS
90th Percentile First
Apparatus Turnout
Time

91

DAYS
In Selected Time Slice

588

INCIDENTS
In Selected Time Slice



2nd Quarter Turn Out times

04:50

MM:SS
Average First
Apparatus Travel Time

09:30

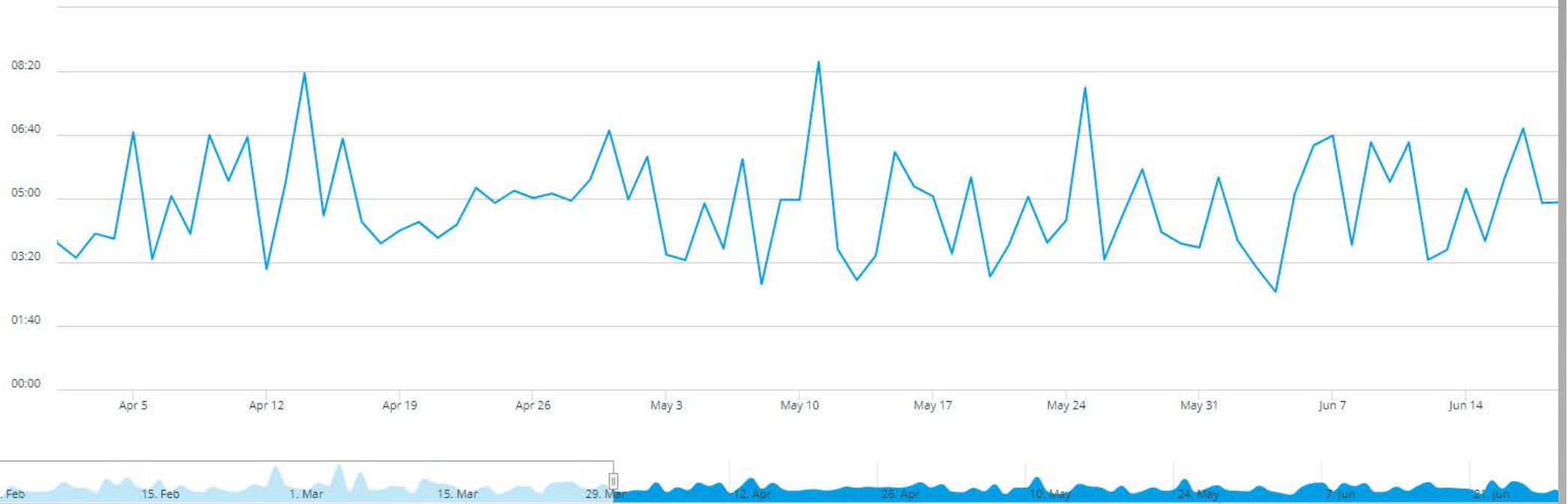
MM:SS
90th Percentile First
Apparatus Travel Time

91

DAYS
In Selected Time Slice

563

INCIDENTS
In Selected Time Slice



2nd Quarter Travel Time