

Enumclaw Fire Department
8-18-2021



Chief's Report

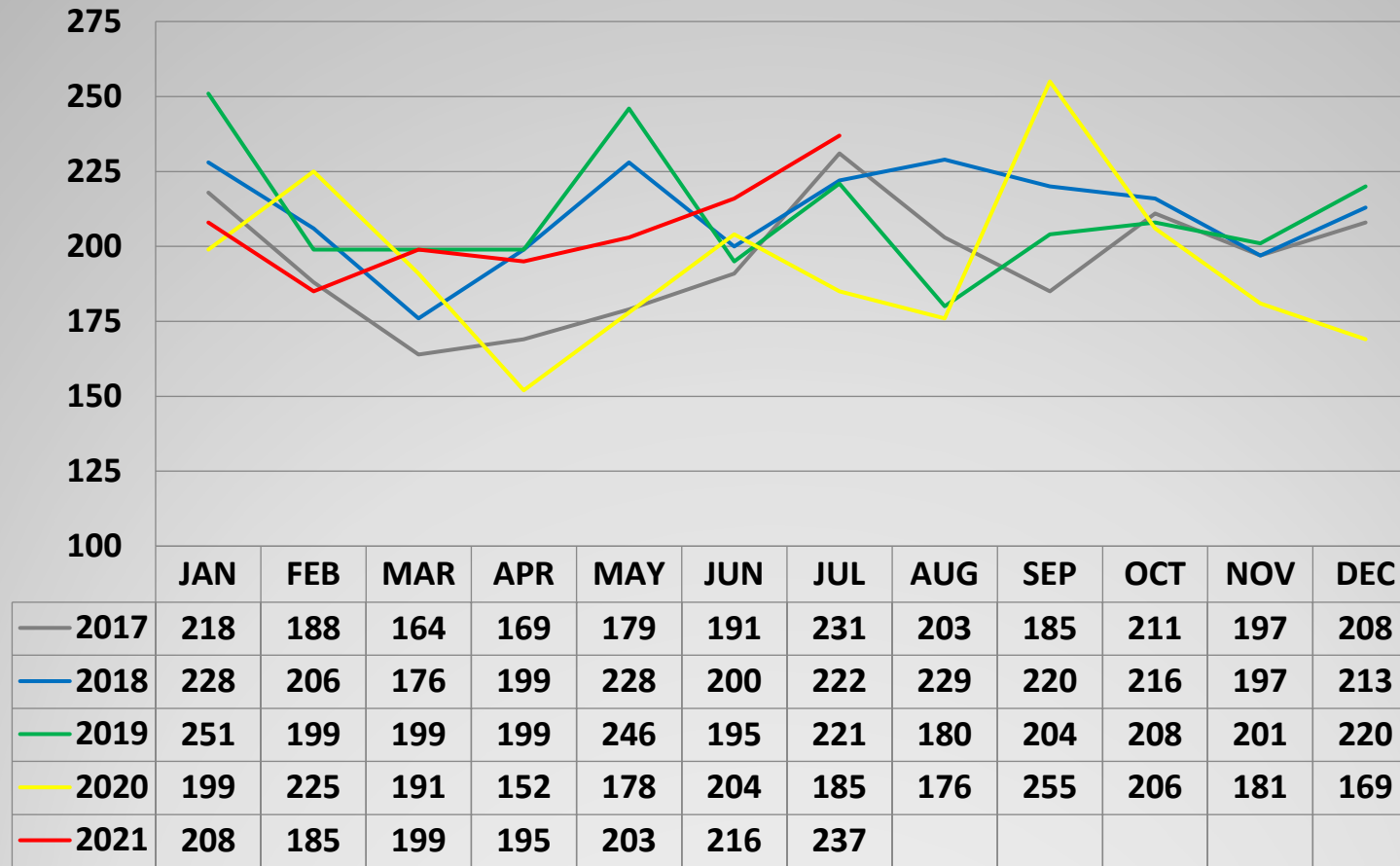
Follow up/Information

- The new firefighters started on 8/1 and will begin Fire Academy on 8/30
- Masking is now required indoors for all EFD personnel and citizens regardless of vaccination status
- Feasibility on Station 43 continues with prospective buyer
- Consultant hired to reclassify Station 43 from government use to single family
- KCEMS reinstated weekly COVID-19 conference calls on 8/9
- Station 42 roofing project is underway
- Mandatory COVID-19 vaccinations required for all EMT's in WA (must be fully vaccinated by 10/18/21)



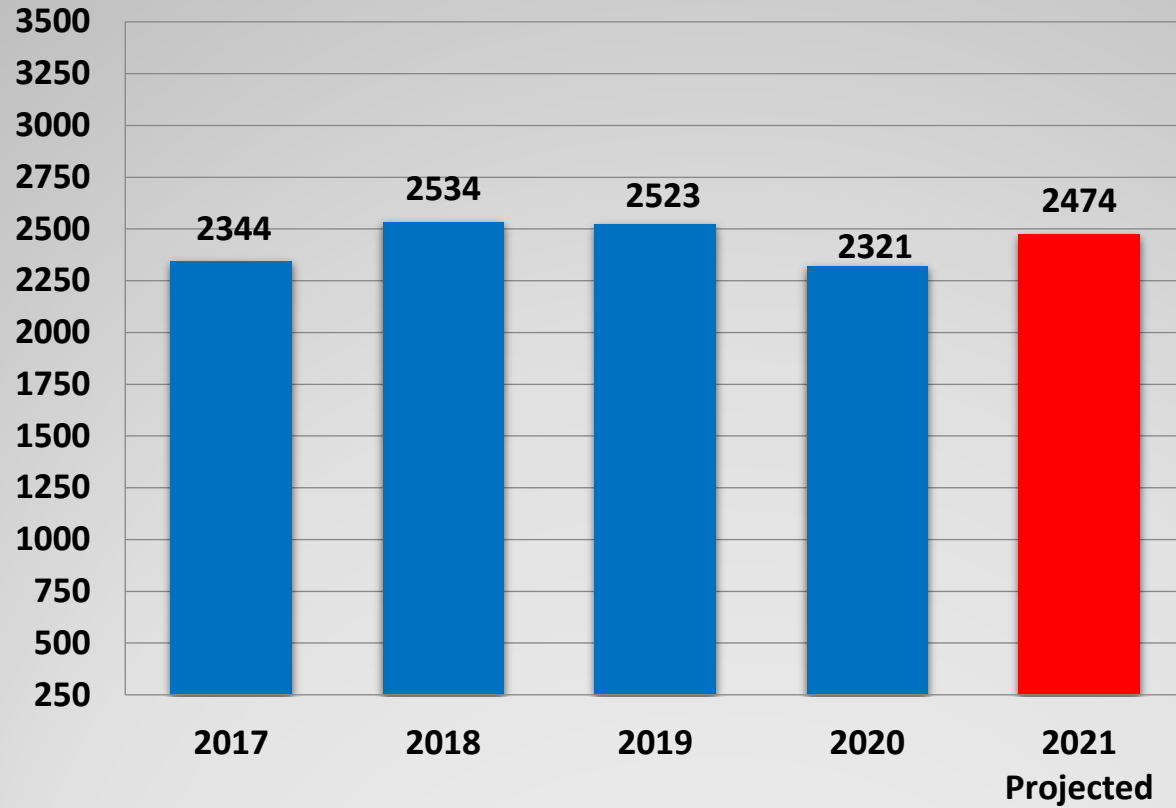
Call Volume

Monthly Call Volume Comparison



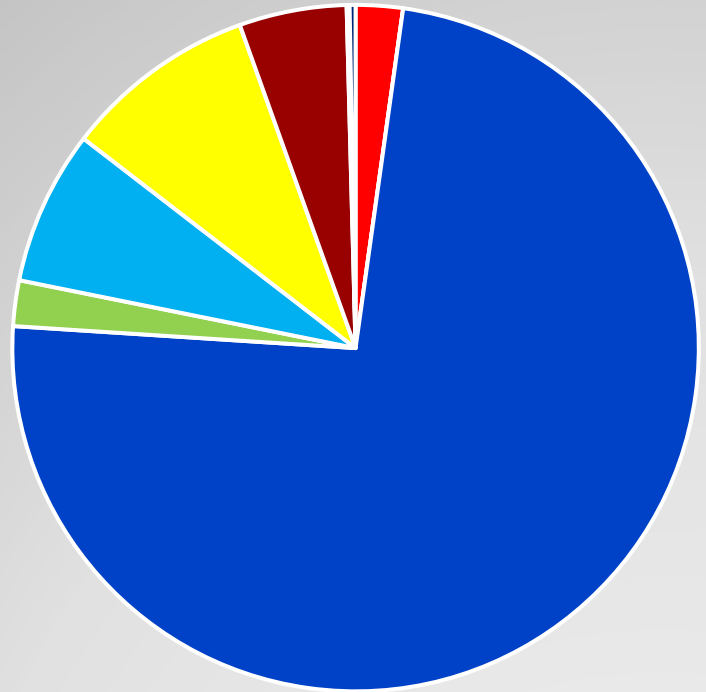
Call Volume Comparison

Annual Call Volume Totals



Call Volume Comparison

YTD Incident Types

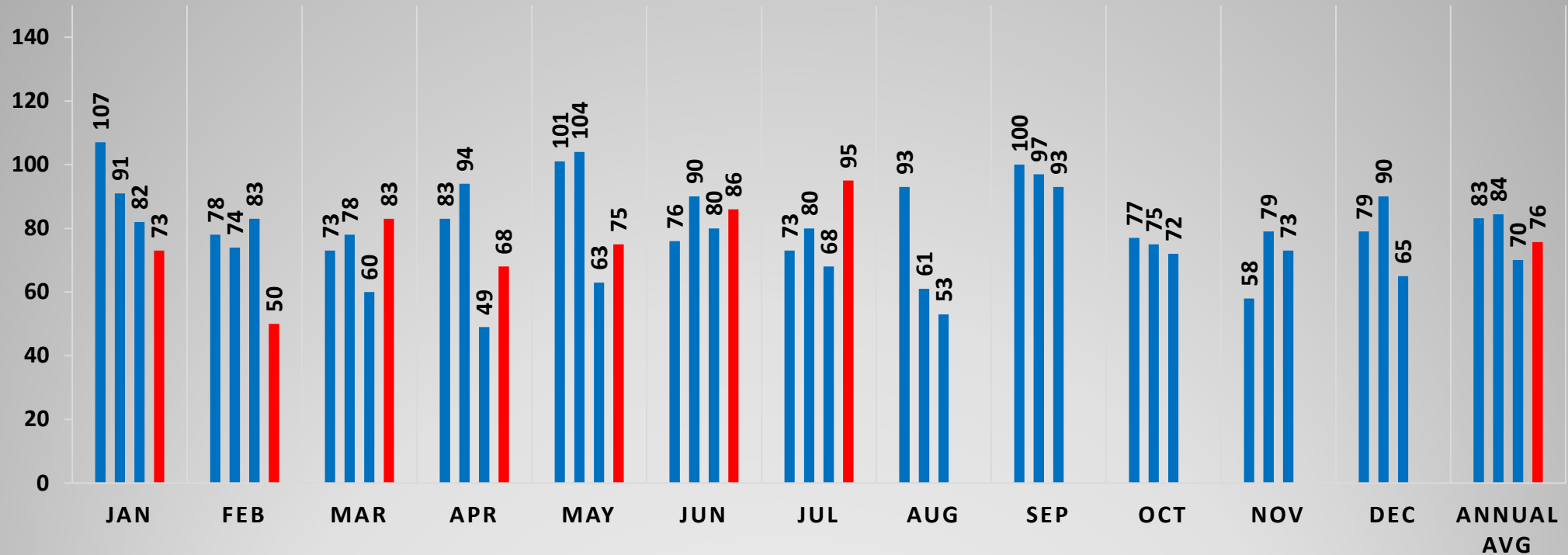


- 100 - Fire 2.2%
- 200 - Explosion Pressure 0.0%
- 300 - EMS 73.8%
- 400 - HAZMAT 2.1%
- 500 - Service Call 7.3%
- 600 - Good Intent 9.1%
- 700 - False Alarm 5.1%
- 800 - Natural Disaster 0.1%
- 900 - Special Incident 0.3%

Call Volume Comparison

TRANSPORTS

■ 2018 ■ 2019 ■ 2020 ■ 2021



2018 Total Ambulance Transports = 998
2019 Total Ambulance Transports = 1013
2020 Total Ambulance Transports = 841
2021 Projected Ambulance Transports = 909

Transports