

**Enumclaw Fire Department**  
**9-15-2021**



**Chief's Report**

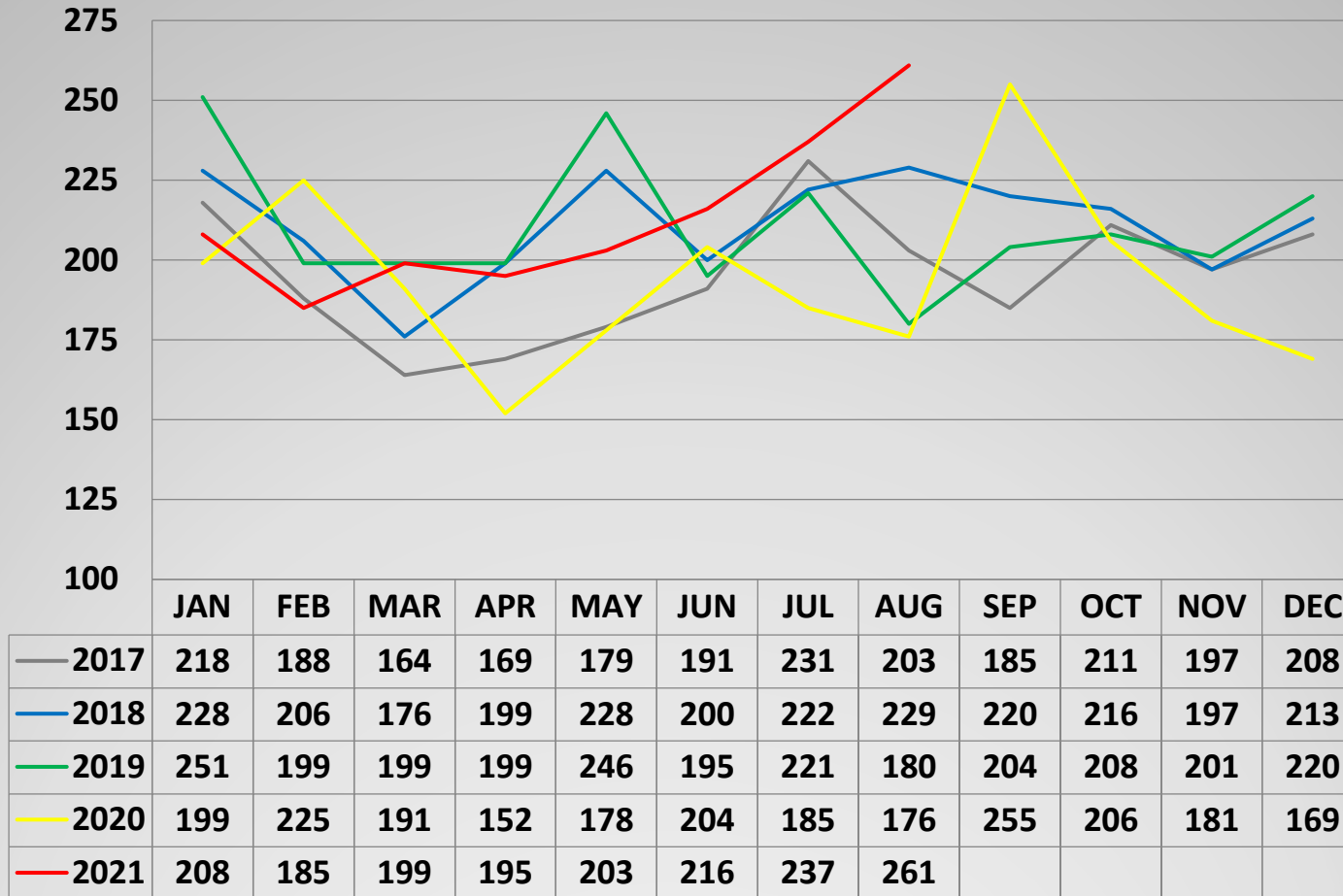
# Follow up/Information

- Three new firefighters began Fire Academy on 8/30
- Two cash offers on Station 43 have been rescinded by prospective buyers
- Application turned in to KC Dept Health for septic system for building reclassification Station 43 from government use to single family
- Consultant beginning pre-application process with King County Building Department for Station 43 reclassification
- Station 42 roofing project is nearly complete
- Working with Attorney's on an accommodation request for the mandatory COVID-19 vaccination requirement for EFD EMT's



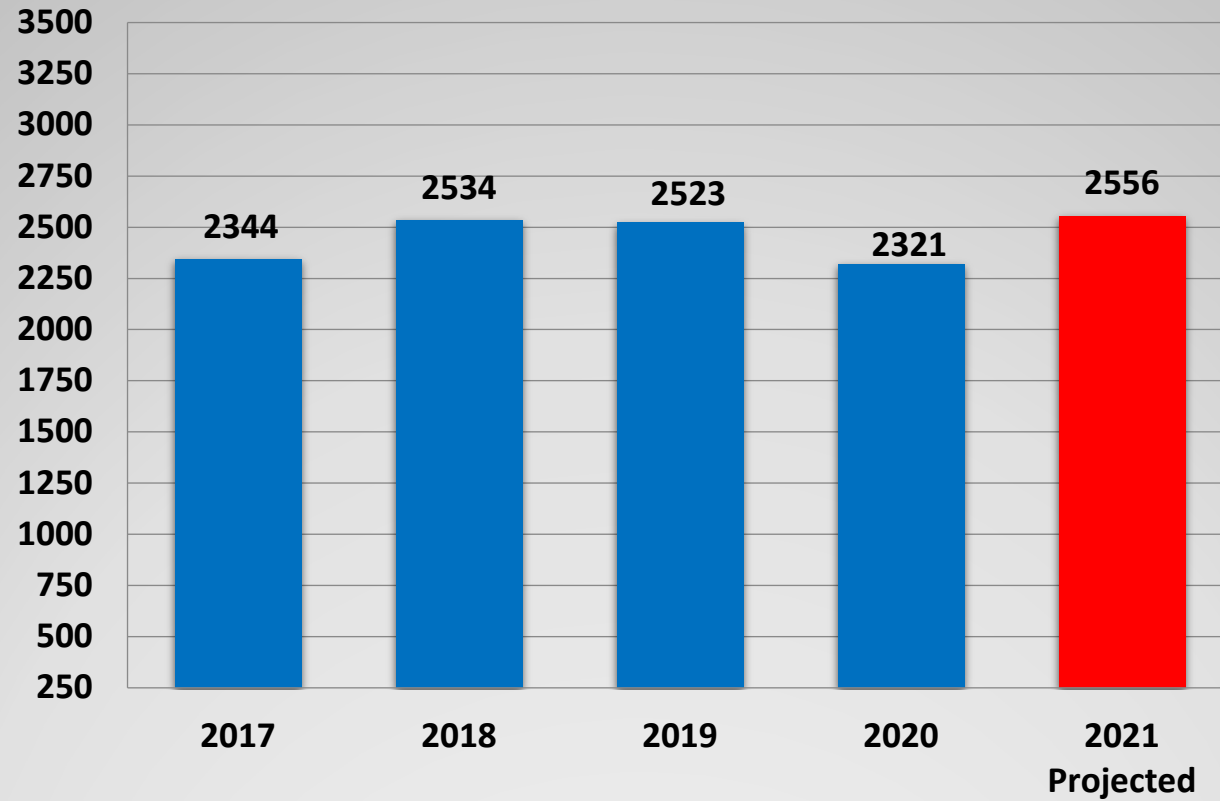
**Call Volume**

## Monthly Call Volume Comparison



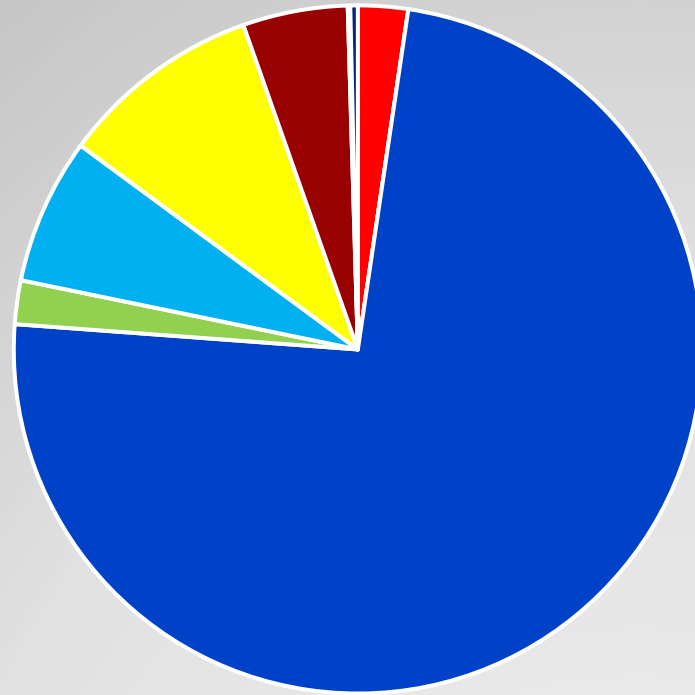
# Call Volume Comparison

## Annual Call Volume Totals



# Call Volume Comparison

## YTD Incident Types

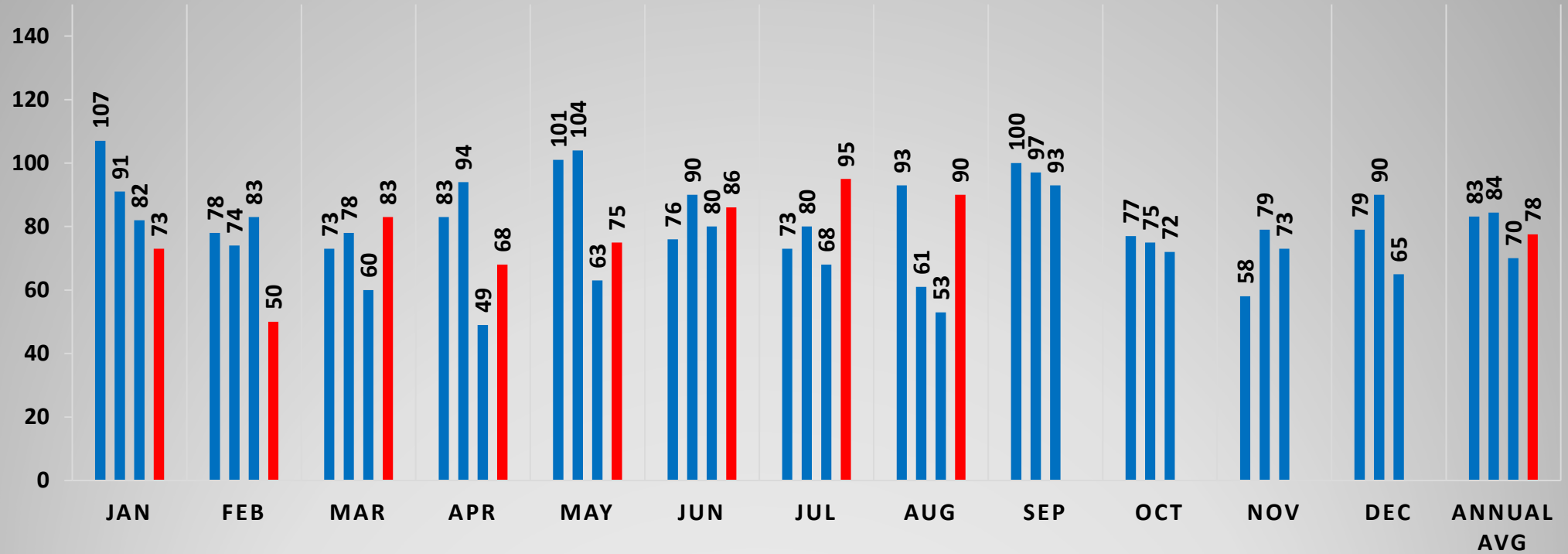


- 100 - Fire 2.3%
- 200 - Explosion Pressure 0.0%
- 300 - EMS 73.8%
- 400 - HAZMAT 2.1%
- 500 - Service Call 6.9%
- 600 - Good Intent 9.5%
- 700 - False Alarm 4.9%
- 800 - Natural Disaster 0.1%
- 900 - Special Incident 0.4%

# Call Volume Comparison

## TRANSPORTS

■ 2018 ■ 2019 ■ 2020 ■ 2021



2018 Total Ambulance Transports = 998  
2019 Total Ambulance Transports = 1013  
2020 Total Ambulance Transports = 841  
2021 Projected Ambulance Transports = 930

# Transports